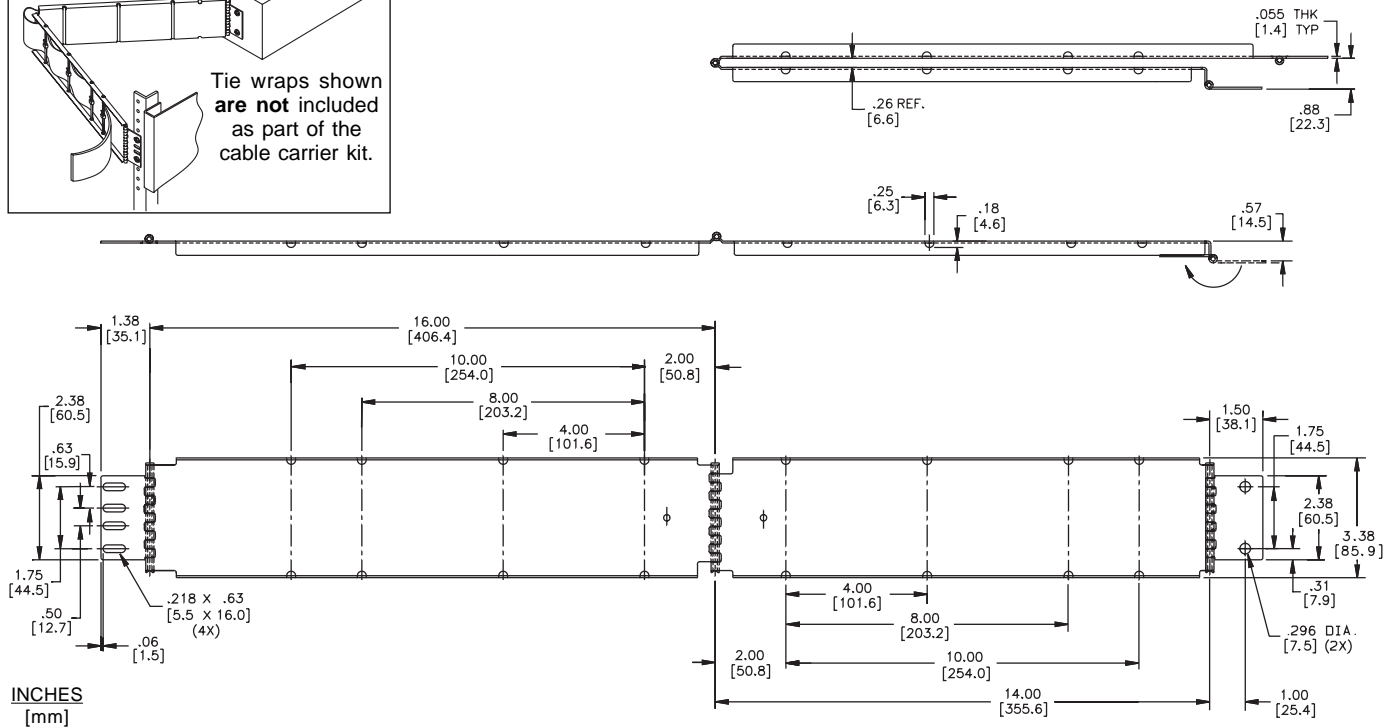
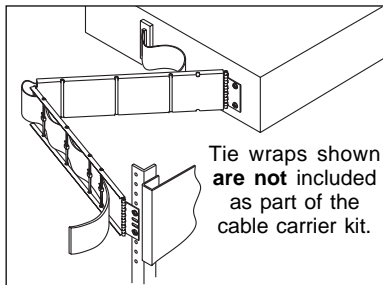


APPLICATIONS: Electronic equipment mounted to moveable chassis. Use Model CC11 whenever wide cable management is required for single or multi-layered ribbon or bundle wire.

Wide Cable Carrier
For Heavy Duty Cable Installations



Installation Instructions

1. Install chassis into EIA rack.
2. Fasten rear cable carrier bracket with (customer supplied) #10 X 32 screws to EIA rack. For adjustment purposes, screw the back brackets on loosely.
3. Locate the front cable carrier bracket at the back of the chassis and attach cable carrier bracket with (customer supplied) #10 X 32 screws.
4. Check cable carrier alignment by opening and closing the chassis. Adjust position until movement is smooth.
5. Tighten screws and attach cable to complete installation.

Packaging

Distributor (D) Pack: Packaged 10 each per box. Polybag includes one cable carrier and installation sheet.

Bulk Pack: Packaged 10 each per box.

Ordering Instructions

To order cable carrier CC11 specify the following:

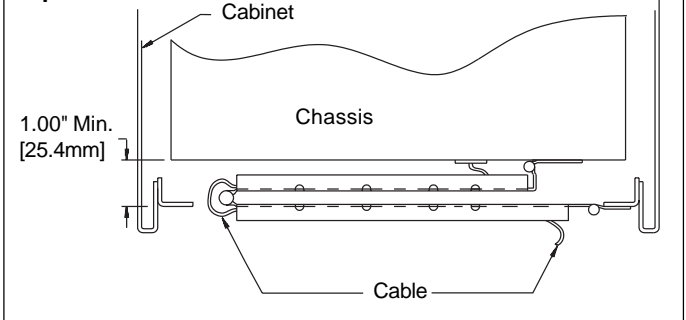
Total Quantity Required 10 Each

Cable Carrier Model Number CC11

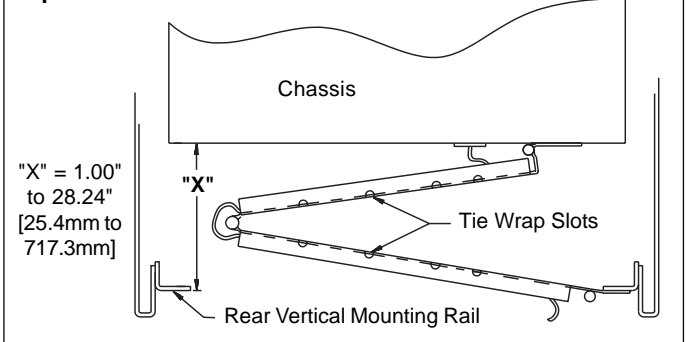
Cable Carrier Finish (Electro-zinc plating) -C

Optional Polybag Packaging D

Top View



Top View



Specifications

Cable Carrier Members: Cold rolled steel
Cable Carrier Finish: Bright electro-zinc plating

NOTE: Specifications, materials, prices, terms, and delivery are subject to change without notice.